

Index No. R-7

CERTIFICATE OF LOCATION OF GOVERNMENT CORNER

NORTH QUARTER Corner of Section 29, Township 106 N, Range 39 W
5TH Principal Meridian, State of Minnesota, County of MURRAY

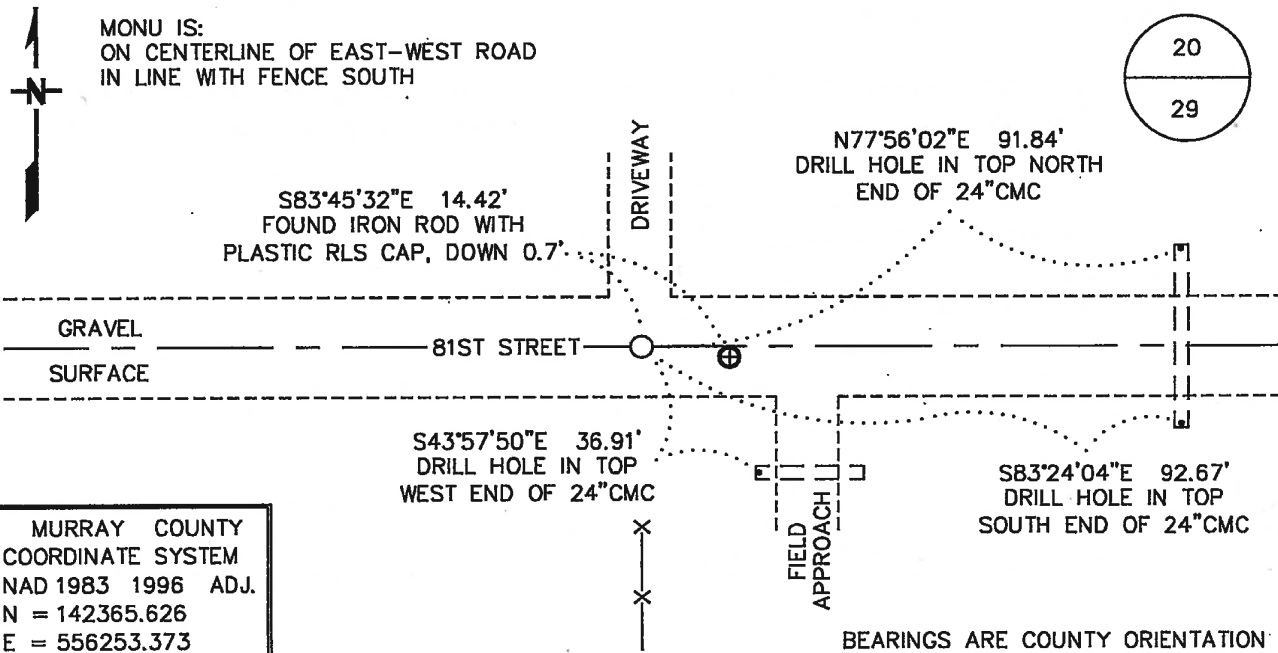
At the corner location shown on the sketch:

On _____ found a _____
DATE

left monument as found, lowered monument, removed monument (explain)

On 11/3/16 Placed a 3/4" X 24" REBAR WITH PLASTIC CAP STAMPED
DATE

"MN DNR LS 17003". DOWN 0.5'



Statement of evidence for this corner location is on back of this page.

FEBRUARY 2017
WMA00384

I hereby certify that this plan, specification, or report was prepared by me or under my direct supervision and that I am a duly Licensed Land Surveyor under the laws of the State of Minnesota.

SIGNATURE Bruce W. Sheppard
BRUCE W. SHEPPARD

DATE 3/23/17

License Number 17003

The DNR Division of Lands and Minerals contacted the following for survey information:

Website - mngeo.state.mn.us

Website - murray-countymn.com

Murray County Recorder's Office

Bueltel-Moseng Land Surveying, Inc. of Marshall

Zieske Land Surveying Inc. of Windom

Madsen Land Surveying Inc. of Fairmont

United States Department of the Interior Fish and Wildlife Service

- 1861 U.S. General Land Office notes, obtained from mngeo.state.mn.us, show the corner marked with a post and a charred stake in a raised mound with trench and pits as per instructions.
- 1896 September, A Surveyor's Record Book, page 61, by J.W. Woolstencroft, obtained from the County Recorder's Office, which is also on Website murray-countymn.com, shows a government mound at the corner.
- 1908 Plat Books for Des Moines River Township, obtained from the County Recorder's Office, show
1926 an east-west road and property divisions north and south in the area of the corner.
- 1987 March 5, a Certificate of Survey in the E1/2 of the SW¹/₄ of Section 20. T106N, R39W, by Timothy P. Bell, LS 16093, obtained from Madsen Land Surveying Inc. shows that a 1/2 inch rebar with "BELL RLS 16093" cap was set for the corner. The corner is shown:
midway and on line between adjoining section corners 2684.03 feet apart
20 feet east of a fence north
- 2016 November 3, the DNR Division of Lands and Minerals found a rebar with a plastic cap stamped "BELL RLS 16093", down 0.7 of a foot in the area of the corner. The capped rebar was found to be:
- a) 2.0 feet south of the center line of an east-west road
 - b) 15.0 feet west of the center line of driveway north
 - c) 14.4 feet east of a fence south
 - d) 2685.01 feet from the northeast corner of Section 29
 - e) 2684.32 feet from a rebar found in the area of the northwest corner of Section 29
 - f) 0.13 of a foot south of a straight line from the northeast corner of Section 29 to a rebar found in the area of the northwest corner of Section 29

Analysis of the above information led to the DNR Division of Lands and Minerals to conclude that the computed lost position is NOT the location of the corner because the east-west road and property division south goes back to 1908 and 1926 – which is an obliterated location for the corner.

Then a 6 foot north-south by 6 foot east-west by 4 foot deep hole was dug with a backhoe, the center being the center line of the east-west road and in line with a fence south. The bottom of the hole was scanned with an electronic metal detector but no metal attraction was obtained and no evidence of a stone or other kind of monument was found in the excavation.

North Quarter Corner of Section 29, Township 106 North, Range 39 West
Page 2 of 2

Then a $\frac{3}{4}$ inch by 24 inch rebar with a plastic cap stamped "MN DNR LS 17003" was set on the center line of the east-west road and in line with a fence south and was found to be:

- a) 14.42 feet west of the found capped rebar
- b) 2699.36 feet from the northeast corner of Section 29
- c) 2669.98 feet from a rebar found in the area of the northwest corner of Section 29
- d) 1.37 feet north of a straight line from the northeast corner of Section 29 to the rebar found in the area of the northwest corner of Section 19

Analysis of the above information led the DNR Division of Lands and Minerals to conclude that the $\frac{3}{4}$ inch by 24 inch rebar with a plastic cap stamped "MN DNR LS 17003" set on the center line of an east-west road and in line with a fence south marks the obliterated location of the corner.